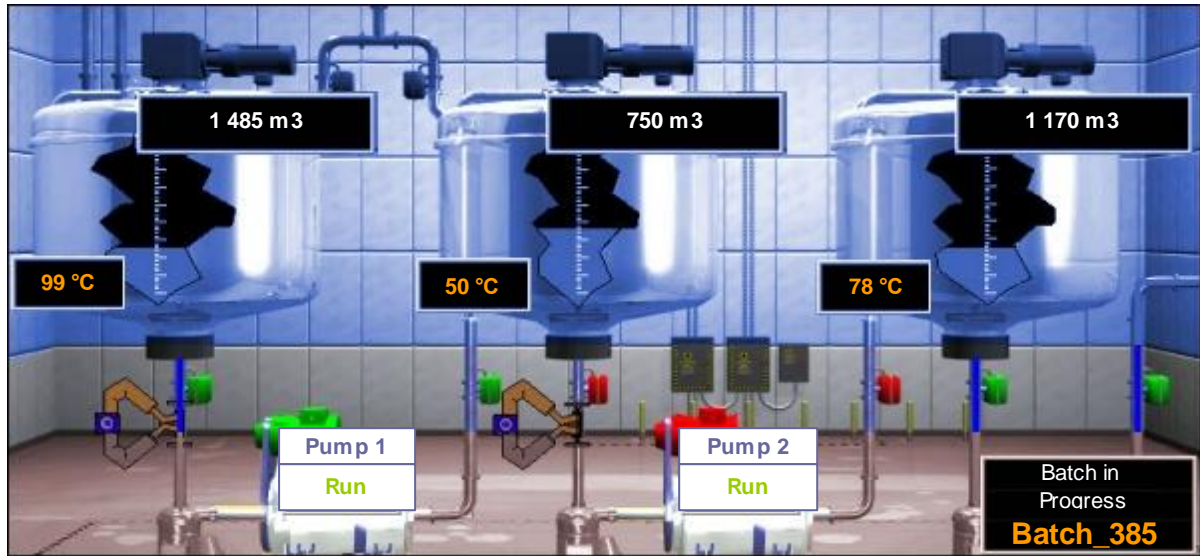




# Batch Report

**DR Object**      **Single Data**



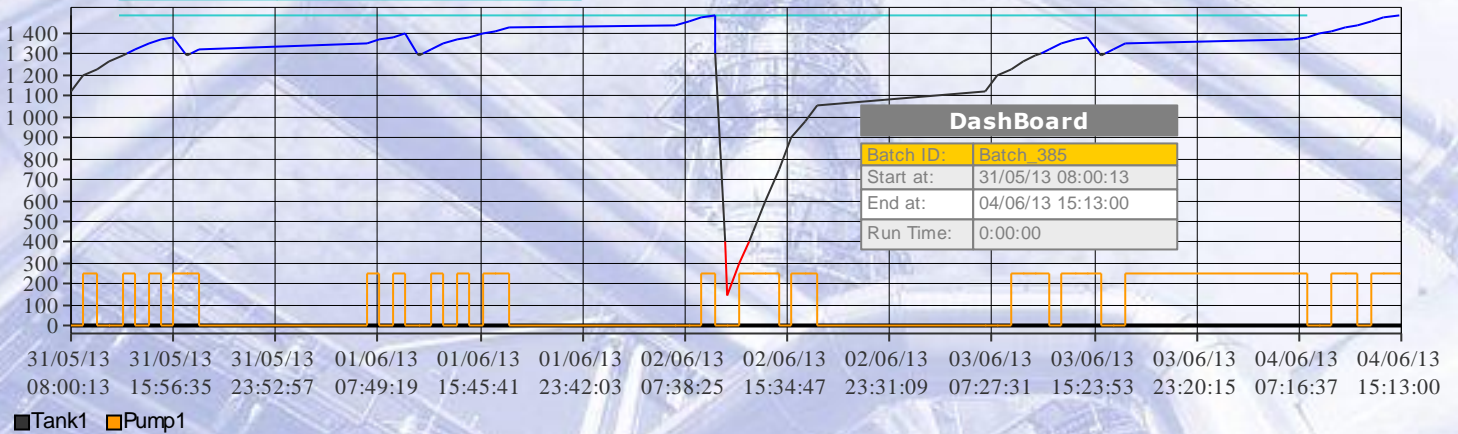
**DR Object**      **Data Table**

Table Settings	
Time Period:	Last Batch
Value Range:	All
Sorted by:	Timestamp
Order:	Descending
Display Max:	Last 15 Records

Timestamp	Batch_ID	Tank1	Tank2	Tank3
01/06/13 07:00:00	Batch_385	1 350	825	75
31/05/13 18:00:00	Batch_385	1 320	975	225
31/05/13 17:00:00	Batch_385	1 290	675	375
31/05/13 16:00:00	Batch_385	1 380	900	450
31/05/13 15:00:00	Batch_385	1 365	525	225
31/05/13 14:00:00	Batch_385	1 350	825	75
31/05/13 13:00:00	Batch_385	1 320	975	225
31/05/13 12:00:00	Batch_385	1 290	675	375
31/05/13 11:00:00	Batch_385	1 260	375	750
31/05/13 10:00:00	Batch_385	1 230	825	1 125
31/05/13 09:00:00	Batch_385	1 200	750	1 350
31/05/13 08:00:13	Batch_385	1 125	675	1 500
...	...	...	...	...

Dashboard	
Batch ID:	Batch_385
Start at:	31/05/13 08:00:13
End at:	04/06/13 15:13:00
Run Time:	0:00:00
Values Logged:	56

**DR Object**      **Chart**



**DR Object**      **SQL Table**

**SQL Table Settings**

Batch Table						
Batch N°	Timestamp	Tank3	User	Family	Priority	Alarm and Events
Batch_385	31/05/13 15:00:00	225.00	Fred	Tank1	2.00	Valve Closed
Batch_385	31/05/13 16:00:00	450.00	Paul	Tank1	8.00	Batch in Progress
Batch_385	31/05/13 17:00:00	375.00	Fred	Tank3	8.00	Tank Cleaning
Batch_385	31/05/13 18:00:00	225.00	Jim	Tank1	8.00	all Valves Closed
Batch_385	01/06/13 07:00:00	75.00	Jim	Tank2	9.00	Production runs
Batch_385	01/06/13 08:00:00	225.00	Fred	Tank3	5.00	Pumps Stop
Batch_385	01/06/13 09:00:00	450.00	Fred	Tank2	1.00	Motor Stopped

# Batch Report

**Batch Table**

Batch N°	Timestamp	Tank3	User	Family	Priority	Alarm and Events
Batch_385	01/06/13 10:00:00	900.00	Jim	Tank1	4.00	Production In Progress
Batch_385	01/06/13 11:00:00	375.00	Paul	Tank3	3.00	Process Finished
Batch_385	01/06/13 12:00:00	225.00	Jim	Tank2	6.00	Production Ends
Batch_385	01/06/13 13:00:00	75.00	Paul	Tank2	9.00	Production Ends
Batch_385	01/06/13 14:00:00	225.00	Paul	Tank1	8.00	Production Starts
Batch_385	01/06/13 15:00:00	450.00	Jim	Tank2	6.00	Tank Low
Batch_385	01/06/13 16:00:00	900.00	Fred	Tank3	5.00	Reset all
Batch_385	01/06/13 17:00:00	1 200.00	Fred	Tank2	4.00	Pumping Starts
Batch_385	01/06/13 18:00:00	1 425.00	Jim	Tank1	4.00	Production Starts
Batch_385	02/06/13 07:00:00	1 485.00	Jim	Tank3	3.00	Starts System
Batch_385	02/06/13 08:00:00	1 500.00	Paul	Tank2	2.00	Valves Open
Batch_385	02/06/13 09:00:00	1 395.00	Fred	Tank2	7.00	Mixer runs
Batch_385	02/06/13 10:00:00	1 170.00	Jim	Tank1	9.00	Enter Settings Value
Batch_385	02/06/13 11:00:00	1 500.00	Paul	Tank1	9.00	Batch can Progress
Batch_385	02/06/13 12:00:00	750.00	Fred	Tank3	7.00	Motor Runs
Batch_385	02/06/13 13:00:00	375.00	Paul	Tank1	6.00	Timer in Progress
Batch_385	02/06/13 14:00:00	225.00	Fred	Tank1	8.00	Valve Open
Batch_385	02/06/13 15:00:00	150.00	Jim	Tank1	5.00	Production Starts
Batch_385	02/06/13 16:00:00	225.00	Jim	Tank3	5.00	Valve Closed
Batch_385	02/06/13 17:00:00	375.00	Fred	Tank1	8.00	Pumps 100%
Batch_385	02/06/13 18:00:00	750.00	Fred	Tank2	9.00	in Progress
Batch_385	03/06/13 07:00:00	1 500.00	Jim	Tank3	6.00	Valve In Closed
Batch_385	03/06/13 08:00:00	1 350.00	Paul	Tank2	8.00	Tank Filled 60%
Batch_385	03/06/13 09:00:00	1 125.00	Jim	Tank1	7.00	Confirm Settings
Batch_385	03/06/13 10:00:00	750.00	Paul	Tank3	6.00	Tank Filled
Batch_385	03/06/13 11:00:00	375.00	Paul	Tank2	5.00	Tank High
Batch_385	03/06/13 12:00:00	225.00	Jim	Tank2	3.00	Tank Filled 80%
Batch_385	03/06/13 13:00:00	75.00	Fred	Tank1	9.00	Temp High
Batch_385	03/06/13 14:00:00	225.00	Fred	Tank1	8.00	Watch tank
Batch_385	03/06/13 15:00:00	450.00	Jim	Tank3	5.00	Ventilation Starts
Batch_385	03/06/13 16:00:00	375.00	Jim	Tank1	2.00	Tank level High
Batch_385	03/06/13 17:00:00	225.00	Paul	Tank2	7.00	Pumps On
Batch_385	03/06/13 18:00:00	75.00	Fred	Tank3	8.00	Pumps Runs
Batch_385	04/06/13 07:00:00	225.00	Jim	Tank2	8.00	Pumps Stopped
Batch_385	04/06/13 08:00:00	450.00	Paul	Tank1	9.00	Temp Grow
Batch_385	04/06/13 09:00:00	900.00	Fred	Tank3	5.00	Temp Fine
Batch_385	04/06/13 10:00:00	1 200.00	Paul	Tank2	1.00	Valve Closed
Batch_385	04/06/13 11:00:00	1 425.00	Fred	Tank2	4.00	Batch in Progress
Batch_385	04/06/13 12:00:00	1 485.00	Jim	Tank1	3.00	Tank Cleaning
Batch_385	04/06/13 13:00:00	1 500.00	Jim	Tank2	6.00	all Valves Closed
Batch_385	04/06/13 14:00:00	1 395.00	Fred	Tank3	9.00	Prodcution runs
Batch_385	04/06/13 15:13:00	1 170.00	Fred	Tank2	7.00	Pumps Stop
...	...	...	...	...	...	...